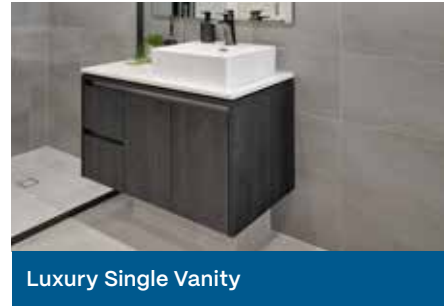


Lifestyle Range

Alabaster Included



Alabaster Options



Each home includes *inspired* features



NaTHERS 7-star energy rated designs



31 course high internal ceilings



Beautiful stone benchtops



Plus more features for your home

The Alabaster

3

2

2

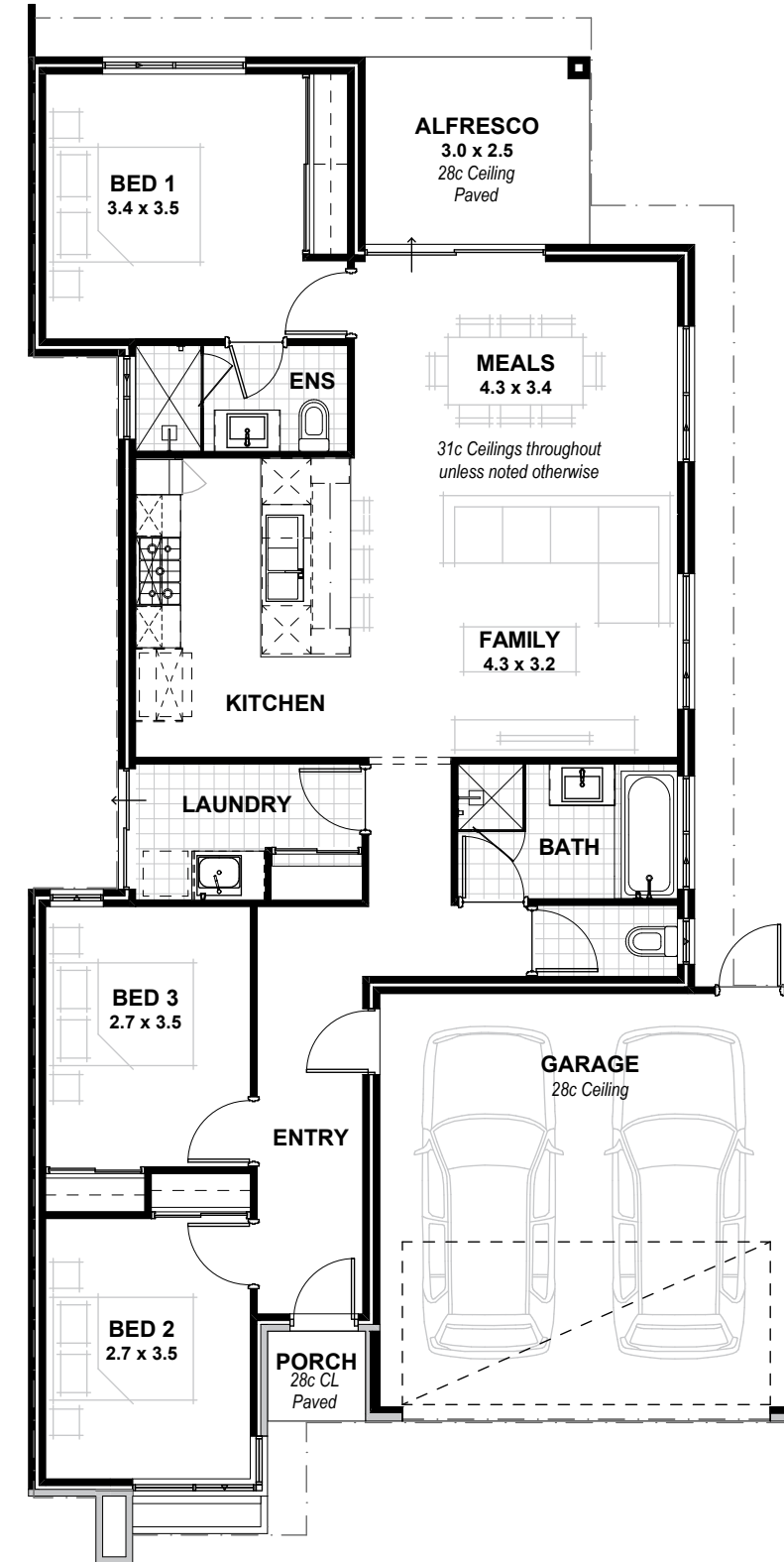
VITAL STATS

House width 10.39m
House length 20.79m

Living area 127m²
(including Alfresco)

Total area 162m²
(excluding eaves)

Scale 1:100



Alabaster Contemporary (Included)



Alabaster Urban



Alabaster Coastal

Lifestyle Range Specifications

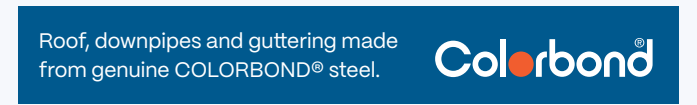
STANDARD INCLUSIONS

Home Owners Indemnity insurance
 H.I.A fixed Building Contact
 7 Star compliant home*
 30 year structural guarantee
 Re-peg to site (new subdivisions)
 Contour survey completed on your block
 Building Permit and Water Corporation application fees included
 Termite treatment and certificate
 R4.0 ceiling insulation to home including Garage (excluding Porch/Portico/Alfresco)
 Double clay brick construction
 2 course Blueprint Homes range external face bricks
 Rolled brick joints in cream mortar
 Your choice of Blueprint Homes standard COLORBOND® metal roof range
 COLORBOND® slotted gutters, fascias & downpipes
 25° roof pitch with H2 treated roof timbers
 Quality Dowell powder-coated aluminium sliding doors
 Quality Dowell powder-coated aluminium breeze lock windows
 Flyscreens to all aluminium opening windows and sliding doors
 Metal corner plaster beads to all internal trafficable corners (excludes sliding door, window and front door reveals)
 Shelf and rail to Bedroom robes (where applicable, as per plan)
 Linen recess with 4 white lined shelves (where applicable, as per plan)
 Painting specification includes ceilings and cornice, doors and door frames, eaves, woodwork and meterbox
 Future connect pack including TV, phone and data point
 Double power points throughout excluding Garage and appliance locations
 3 external, 1 Garage ceiling and ample internal light points
 Hard wired smoke detectors & 2 safety switches
 2 external garden taps
 250L heat pump hot water system
 Double Garage with concrete hardstand and Blueprint Homes range COLORBOND® auto sectional door with flush fit pelmet and track system and 3 controllers
 Up to 6m long full width paved Driveway, Porch/Portico, Alfresco and 1m wide path from Blueprint Homes 60mm Lifestyle range (except for rear Garage designs which include a 2m long driveway as standard)
 Solidcore flush panel door to Garage & Fibreglass flush panel door to Rear Garage (where applicable, as per plan)
 Quality Gainsborough entrance set and double deadlock to Garage door & Gainsborough entrance set to Rear Garage door (where applicable, as per plan)
 Quality Gainsborough internal lever door handles

KITCHEN INCLUSIONS

20mm stone benchtops from Lifestyle Kitchen specification
 Diamond White Gloss or Diamond White Gloss/Portland Ash doors, drawer fronts, fixed panels to island bench and all exposed edges
 2650mm long x 1200mm wide island bench
 Lifestyle Kitchen specification handles
 Pull-out double bin
 Double sized Blum cutlery tray
 Wall tiling up to underside of overhead cupboards from Builder's Lifestyle range
 Laminated Pantry with four shelves
 Microwave recess with single power point
 Pot drawers
 Overhead cupboards
 Soft closing doors and drawers
 Lifestyle specification Kitchen sink – handmade 1¼ bowl above-mount stainless steel sink with single drainer and basket wastes or handmade undermount double bowl stainless steel sink and basket wastes with European inspired sink mixer
 Dishwasher provision with cold tap and single power point
 Westinghouse 900mm stainless steel freestanding stove (electric oven and gas hotplate)
 Electrolux 860mm stainless steel concealed rangehood

*7 Star compliance excludes the Bickley Valley climate zone and is subject to the Owner's land & design amendments.



SCULLERY INCLUSIONS (WHERE APPLICABLE, AS PER PLAN)

20mm stone benchtops from Lifestyle Scullery specification
 Diamond White Gloss doors, fixed panels and all exposed edges
 Lifestyle Scullery specification handles
 Wall tiles from Builder's Lifestyle range
 Soft closing doors

LAUNDRY, ENSUITE & BATHROOM INCLUSIONS

20mm stone benchtops from Lifestyle specification to Bathroom and Ensuite
 Diamond White Gloss, Portland Ash or Teakwood doors, fixed panels and all exposed edges to Bathroom and Ensuite
 20mm Cotton White stone benchtop and Diamond White Gloss doors, fixed panels and all exposed edges to Laundry
 Soft closing doors and drawers (drawers where applicable, as per plan)
 2m high tiling from Builder's Lifestyle range to Bathroom and Ensuite shower recess
 Floor tiling from Builder's Lifestyle specification to Bathroom, Ensuite, WC and Laundry
 Semi frameless clear glazed shower screen and pivot door to Bathroom and Ensuite
 Frameless mirrors (full width of the vanity) to Bathroom and Ensuite
 European inspired mixers throughout
 European inspired gooseneck with round or square shower rose to Bathroom and Ensuite
 European inspired above mount china basins to Bathroom and Ensuite
 European inspired rimless dual flush china toilet suite with 4-star rating and soft close seat
 European inspired 45lit stainless steel trough
 European inspired chrome double towel rails and toilet roll holders
 Automatic washing machine taps
 Flumed exhaust fan to WC areas
 Chrome plated floor wastes
 1700mm inset bath to Bathroom (where applicable, as per plan)

ADDITIONAL BUILT-IN VALUE

Feature Front Elevation including acrylic render
 Aluminium single lite (glazed) Front Entry door with electronic smart lock handle
 31c high ceilings with painted cove cornice internally throughout
 28c high hardflex ceiling with painted MDF cornice to Garage
 LED lighting throughout internally from Builder's Lifestyle specification
 6mm EnergyTech clear glazing to all windows & sliding doors excluding wet areas
 Cavity wall insulation included to external cavity walls
 Hobless showers to Bathroom & Ensuite
 Mitred tiled edges throughout
 Mirrored or Vinyl sliders to all minor Bedroom robes & Laundry linen (where applicable, as per plan)



BLUEPRINT HOMES (WA) PTY LTD

11 Delawney Street, Balcatta WA 6021
 PO Box 772, Balcatta WA 6914
 6241 4888
blueprinthehomes.com.au

Disclaimer: This information is accurate at time of printing 1st March 2025. All details are to be confirmed during your consultation with your Blueprint representative and your final plans and addenda will represent what you have purchased. Images for illustration purposes only. 03/2025_BP0001_BRN11904



The Alabaster



9440 1800
blueprinthehomes.com.au

It's better building with Blueprint