

The Featherflower



BLUEPRINT HOMES (WA) PTY LTD

11 Delawney Street, Balcatta WA 6021
PO Box 772, Balcatta WA 6914
6241 4888

blueprinthomes.com.au

Disclaimer: This information is accurate at time of printing. All details are to be confirmed during your consultation with your Blueprint representative and your final plans and addenda will represent what you have purchased.



9440 1800
blueprinthomes.com.au

It's *better* building
with Blueprint

The Featherflower

16 Featherflower Entrance, Piara Waters
(Wildflower Estate)



4



2



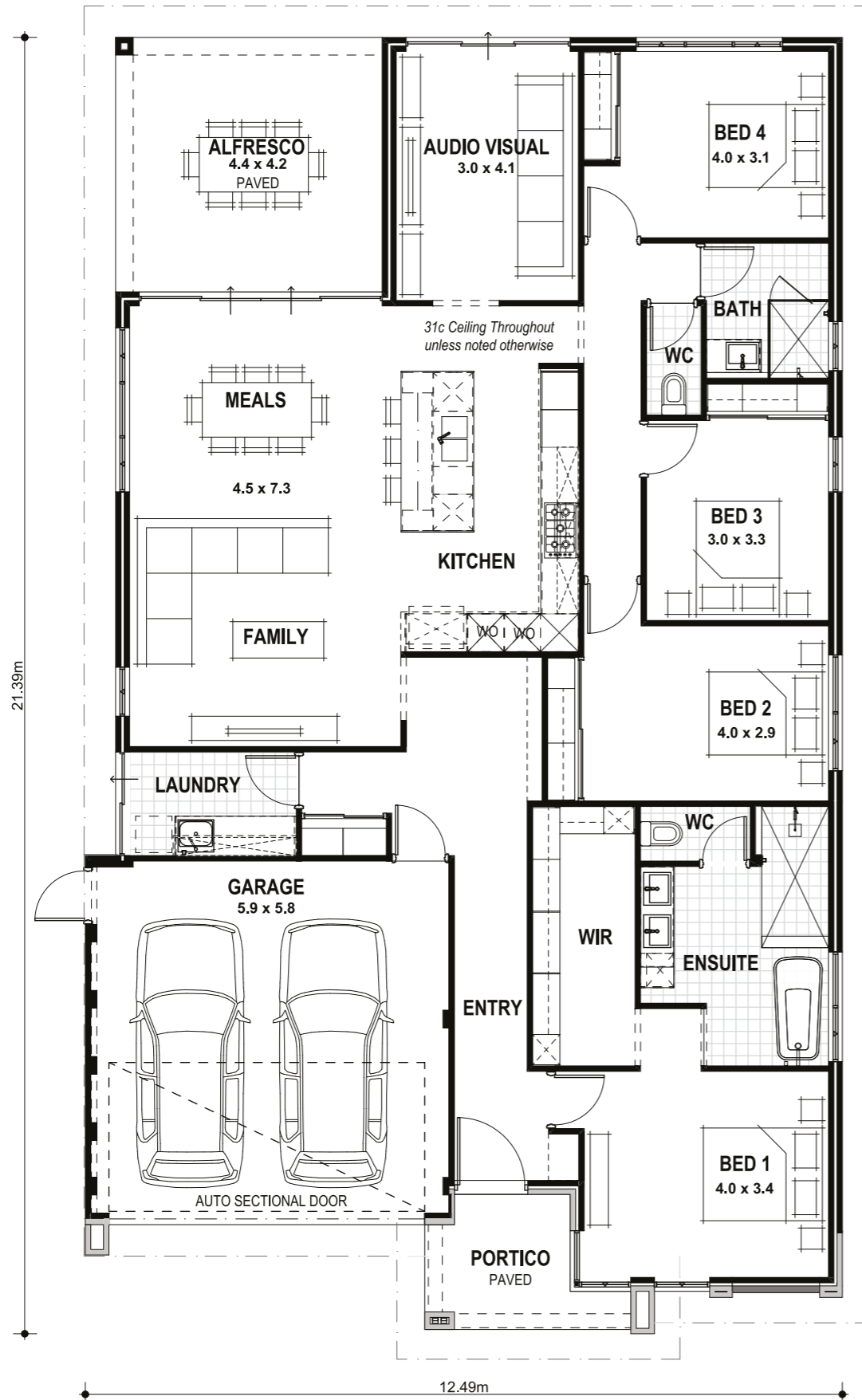
2

VITAL STATS

Living area 193m²
(including Alfresco)

Total area 248m²
(excluding eaves)

Scale 1:100



NAME

SIGNATURE

DATE / /

The Featherflower Specification

STANDARD INCLUSIONS

- Home Owners Indemnity insurance
- H.I.A. fixed Building Contract
- 6 Star compliant home
- 4 month maintenance period
- Re-Peg to site (to new subdivisions)
- Contour survey completed on your block
- Building Permit and Water Corporation application fees included
- Termite treatment and certificate
- Double clay brick construction
- 2 course Blueprint Homes range external face bricks
- Rolled brick joints in cream mortar
- Your choice of Builders specification COLORBOND® metal roof range
- COLORBOND® fascia, downpipes and slotted gutters
- 25° roof pitch as standard
- H2 treated roof timbers
- R4.0 ceiling insulation to home including Garage (excluding Portico and Alfresco)
- Painting specification includes ceilings and cornice, doors and door frames, eaves, woodwork and meterbox
- Feature Front Elevation
- Acrylic render to Front Elevation (including return to Bedroom 1) (excludes Garage internally)
- Builders Featherflower range to external face brickwork with cream mortar to sections of Front Elevation
- Double Garage with 31c high 10mm plasterboard ceiling and concrete hardstand
- Blueprint Homes Display COLORBOND® or FLEXOGRAPHIC range auto sectional door with 3 controllers to Garage
- Up to 6m long full width paved Driveway, Portico, Alfresco and 1m wide path (from Builders 60mm display range) (with exception of rear Garage designs which include a 2m long Driveway as standard)
- 31c high ceilings as displayed
- Dropped bulkhead to Entry recesses, Kitchen and Laundry
- 10mm plasterboard ceiling to Portico and Garage
- 10mm plasterboard 3c recessed ceiling to Alfresco
- 75mm Coved cornice throughout internally and to Portico, Alfresco & Garage
- 10mm Aquacheck lining to all wet area walls
- 10mm plasterboard lining to all remaining internal walls (excluding Garage)
- Quality Dowell powder-coated aluminium sliding glass doors
- Quality Dowell powder-coated aluminium breeze lock windows
- Flyscreens to all aluminium opening windows and sliding doors
- 28c high x 1200 wide aluminium single lite (clear glass) door with electronic smart lock handle and frame to Entry
- 28c high aluminium 4 panel double sliding doors to Meals / Alfresco
- 28c high aluminium 3 panel single sliding door to Audio Visual
- 28c high aluminium 2 panel standard sliding door to Laundry
- 28c high head to all aluminium windows
- 2340mm high solidcore flush panel door with JDS Mod metal door frame to Garage
- 2340mm high M&B Elements fibreglass Weathercote flush panel door with JDS Mod metal door frame to Side Garage
- Gainsborough Trilock Contemporary door hardware to Garage and Side Garage doors
- 2340mm high hollowcore flush panel doors and JDS Mod metal door frames to remainder internally
- Gainsborough Choice range lever door handles to internal doors
- Choice of framed vinyl/mirrored/Supa Whitekote sliders to Minor Bedroom robes and Entry Linen
- Blueprint Homes built-in shelving system (colour: Slate Grey) to Master Suite walk-in robe
- Blueprint Homes built-in shelving system (colour: Slate Grey) to Minor Bedroom robes
- Built-in Linen with 4 white lined shelves
- Future connect pack including TV, phone and internet point
- Double power points throughout excluding Garage and appliance locations
- 3 external light points, 1 Garage ceiling light point and ample internal light points
- Blueprint Homes Range Clipsal Iconic light switches and power points
- Upgrade colour to all Clipsal Iconic power points and light switches
- Flumed exhaust fan to Ensuite, Ensuite WC, Bathroom and Main WC
- Hard wired smoke detectors

- 2 safety switches
- Lock and viewing panels to both meter boxes
- Choice of Chrome or Matte Black European inspired mixers throughout
- Dishwasher provision with cold tap and single power point
- Automatic washing machine taps
- 6 star gas continuous flow 26L hot water system
- 2 external garden taps
- KITCHEN**
- 20mm stone benchtops from Builders Luxury specification to Kitchen
- Crystal White Matt, Diamond White Gloss or Diamond White Gloss/Portland Ash doors, drawer fronts and all exposed edges to Kitchen
- Builders Luxury Kitchen specification handles to Kitchen
- Pull-out double bin
- Double sized Blum® cutlery tray
- Laminated Pantry with four shelves
- Microwave recess with single power point
- Pot drawers
- Overhead cupboards
- 2650mm long x 1200mm wide island bench with waterfall ends
- Soft closing doors and drawers
- Two Electrolux 600mm dark stainless steel electric ovens
- Electrolux 900mm black ceramic glass gas hotplate
- Electrolux 800mm stainless steel concealed rangehood
- European inspired double bowl undermount stainless steel sink
- LAUNDRY, ENSUITE, BATHROOM AND MAIN WC**
- 20mm stone benchtops from Builders Luxury specification to Laundry, Ensuite and Bathroom
- Crystal White Matt or Diamond White Gloss doors and all exposed edges to Laundry
- Diamond White Gloss, Portland Ash or Oakwood doors, drawer fronts and all exposed edges to Ensuite and Bathroom
- Builders Luxury specification bar style handles to Laundry
- Builders Luxury specification aluminium finger grip handles to Ensuite and Bathroom
- Soft closing doors and drawers (where applicable)
- 2m high tiling to Ensuite and Bathroom shower recess
- 1.1m high tiling to remainder of Ensuite and Bathroom
- 1.1m high tiling to Ensuite WC and Main WC
- Floor tiling to Laundry, Ensuite, Ensuite WC, Bathroom and Main WC
- Tiled niche to Ensuite shower recess
- Tiled ledge to Bathroom shower recess and vanity area
- Semi frameless clear glazed shower screen and pivot door to Bathroom
- Slimline frame mirrors to Ensuite and Bathroom
- European inspired 45ltr stainless steel trough to Laundry
- European inspired above counter china basins to Ensuite and Bathroom
- Choice of Chrome or Matte Black European inspired dual shower square head combo to Ensuite
- Choice of Chrome or Matte Black European inspired rail shower to Bathroom
- European inspired rimless dual flush china toilet suite with 4 star rating and soft close seat to Ensuite WC and Main WC
- Choice of Chrome or Matte Black European inspired double towel rails and toilet roll holders
- Tile insert floor wastes
- Hobless showers to Ensuite and Bathroom
- Mitred tiled edges throughout
- European inspired 1700mm freestanding bath to Ensuite