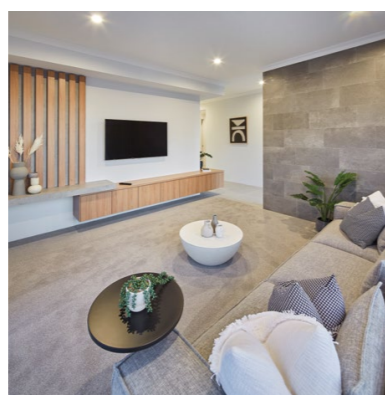




# The Catalina



## BLUEPRINT HOMES WA PTY LTD

11 Delawney Street, Balcatta WA 6021  
PO Box 772, Balcatta WA 6914  
6241 4888  
[blueprinthomes.com.au](http://blueprinthomes.com.au)



Disclaimer: This information is accurate at time of printing. All details are to be confirmed during your consultation with your Blueprint representative and your final plans and addenda will represent what you have purchased.  
09/2022\_BP0749\_BRN11904



9440 1800  
[blueprinthomes.com.au](http://blueprinthomes.com.au)

It's *better* building  
with **Blueprint**



# The Catalina

13 Cristianos Road,  
Mindarie  
(Catalina Beach Estate)



4



2



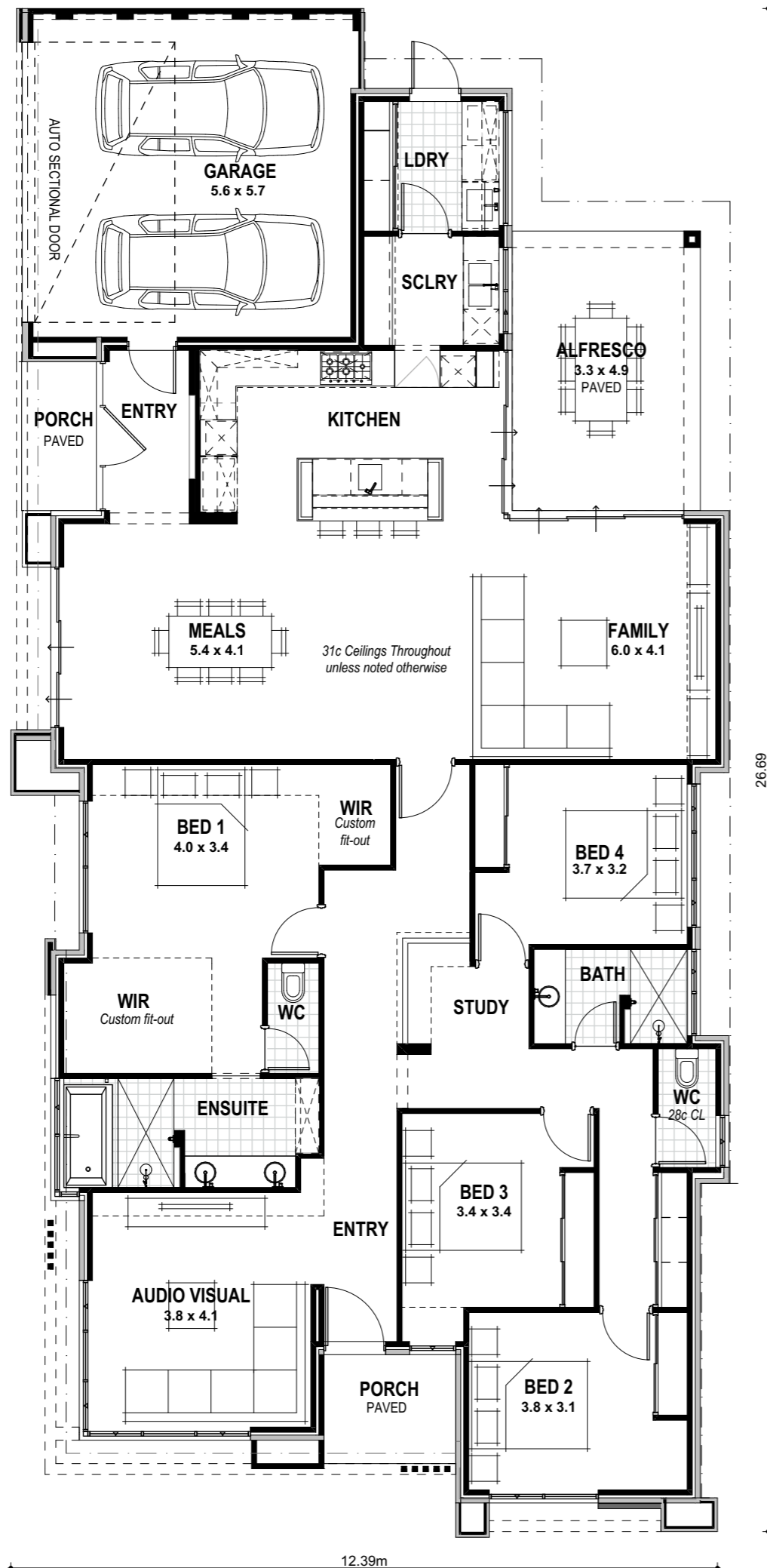
2

## VITAL STATS

Living area 237m<sup>2</sup>  
(including Alfresco)

Total area 279m<sup>2</sup>  
(excluding eaves)

Scale 1:100



NAME

SIGNATURE

DATE / /

# The Catalina Specification

## STANDARD INCLUSIONS

- Home Owners Indemnity insurance
- H.I.A. fixed Building Contract
- 6 Star compliant home
- 4 month maintenance period
- Re-Peg to site (to new subdivisions)
- Contour survey completed on your block
- Building Permit and Water Corporation application fees included
- Termite treatment and certificate
- Double clay brick construction
- 2 course Blueprint Homes range external face bricks
- Rolled brick joints in cream mortar
- Your choice of Builder's specification COLORBOND® metal roof range
- COLORBOND® fascia, downpipes and slotted gutters
- 25° roof pitch as standard
- H2 treated roof timbers
- Painting specification includes ceilings and cornice, doors and door frames, eaves, woodwork and meterbox
- Feature Front Elevation
- Acrylic render to entire house externally (including Alfresco pier) (excludes Garage internally and Garage zero lot wall)
- Builders Catalina range composite cladding to section of Front Elevation and sections of Secondary Street Elevation
- Builders Catalina range external tile cladding to section of Front Elevation and section of Secondary Street Elevation
- Double Garage with 31c high 10mm plasterboard ceiling and concrete hardstand
- Builders Catalina Sunshine range auto sectional door with 3 controllers to Garage
- Up to 6m long full width paved Driveway, Verandah/Portico/Porch, Alfresco and 1m wide path (from Builders 60mm Display range) (with exception of rear Garage designs which include a 2m long Driveway as standard)
- 28c high ceiling to Main WC
- 31c high ceilings to remainder as displayed
- 10mm plasterboard 3c recessed ceiling to Alfresco
- R4.0 ceiling insulation to home including Garage
- Builders Display range cornice throughout internally, to Porch 1, to Porch 2, to Alfresco and to Garage
- Gyprock lining to all internal walls (excluding Garage and full height wall tiling areas)
- Quality Dowell powder-coated aluminium sliding glass doors
- Quality Dowell powder-coated aluminium breeze lock windows
- Flyscreens to all aluminium opening windows and sliding doors
- 28c high x 1020mm wide aluminium single lite (clear glass) door and frame to Entry 1
- 28c high x 1020mm wide aluminium single lite (clear glass) door, two 28c high sidelights (clear glass) and frame to Entry 2
- 600mm Pull handle entry set to Entry 1 door and to Entry 2 door
- 28c high x 820mm wide aluminium single lite (clear glass) door and frame to Laundry (External)
- Designer lever handle entry set to Laundry (External) door
- 28c high aluminium 3 panel stacker sliding doors to Family, Meals and Kitchen
- 19c high head to Laundry window
- 25c high head to Main WC window
- 28c high head to all remaining windows
- Corinthian Deco range solid door to Garage/Entry 2
- Solidcore Flush Panel door to Rear Garage
- Gainsborough Trilock Contemporary door hardware to Garage/Entry 2 and Rear Garage doors
- 2340mm high doors and Deluxe metal frames internally, to Garage/Entry 2 and to Rear Garage (excludes Main WC: 2040mm high)
- M&B Brentwood (clear glass) door between Entry 1 Passage and Family/Meals
- Corinthian Deco range honeycomb doors elsewhere internally
- Gainsborough Avant Series lever door handles (64mm rosette) to internal doors
- Quality Mirrorline mirrored sliders to Bedroom 2 robe, Bedroom 3 robe and Bedroom 4 robe
- Quality Mirrorline Supa whitekote sliders to Minor Bedroom Passage Linen and Laundry Linen
- Built-in shelving system with upgrade laminate finish and colour and Catalina range cabinet handles to Master Suite walk-in robe 1 and walk-in robe 2
- Built-in shelving system to minor Bedroom robes
- Built-in Linen to Minor Bedroom Passage and Laundry with 4 white lined shelves
- Future connect pack including TV, phone and internet point
- Double power points throughout excluding Garage and appliance locations
- 3 external light points, 1 Garage ceiling light point and ample internal light points
- Builders Display Range Clipsal Iconic light switches and power points
- Upgrade colour to Clipsal Iconic power points on Kitchen wall tiling
- Clipsal Iconic double power point with USB to Bedroom 2 desk area and Study desk area

Flumed exhaust fan to Ensuite, Ensuite WC, Bathroom and Main WC

Hard wired smoke detectors

2 safety switches

Lock and viewing panels to both meter boxes

Builders Catalina range plumbing fixtures and fittings (includes wall mounted basin sets throughout)

Automatic washing machine taps

6 star gas continuous flow 26L hot water system

2 external garden taps

Two stone colours allowed to benchtops

Soft closing cabinet doors and drawers

A.B.S. edges to laminated cupboard doors and drawers

Builders Catalina range wall and floor tiles

## KITCHEN AND SCULLERY

Builders Catalina range 40mm mitred edge stone benchtop to Kitchen (no waterfall ends)

Builders Catalina range 20mm thick stone benchtop to Scullery (no waterfall ends)

Builders Catalina range 20mm thick x 200mm high stone splashback to Scullery

Contrasting Grain finish laminate to Kitchen as displayed

Contrasting standard finish laminate to Kitchen as displayed

Contrasting standard finish laminate to Scullery as displayed

Laminate door and fixed panel between Kitchen and Scullery

Two laminate end panels with negative detail to Kitchen island bench

Two corner hinges to Kitchen corner cupboards

Pot drawers to Kitchen

Overhead cupboards to Kitchen

33mm edge laminate open shelving unit to Kitchen

Open shelf above microwave to Kitchen

Laminate pantry with 4 white lined shelves to Scullery

Push catch handles to fridge recess cupboards, to cupboard over open shelf/oven and to cupboard over microwave in Kitchen

10mm finger pull handles to all remaining overhead cupboards to Kitchen

Builders Catalina range cabinet handles to Scullery pantry doors and Kitchen/Scullery door (Scullery side only)

30mm recessed finger groove handles to all remaining cabinetry to Kitchen and Scullery

Two Hettich ArciTech 450mm wide bins to Kitchen bin drawer (concealed drawer at top) and to Scullery bin drawer

Two Electrolux dark stainless steel 600mm multi-function electric ovens to Kitchen

Electrolux 900mm black ceramic glass gas hot plate

Electrolux 900mm dark stainless steel canopy style rangehood (flumed) to Kitchen

Electrolux dark stainless steel microwave with trim kit to Kitchen

Smeg (6 Star) fully integrated dishwasher with cold tap, single power point and laminate panel to match adjacent Scullery cabinet doors

## LAUNDRY, ENSUITE, BATHROOM AND MAIN WC

Builders Catalina range 20mm thick stone benchtops to Laundry, Ensuite and Bathroom (no waterfall ends)

Nuance finish laminate to Ensuite and Bathroom

Overhead cupboards to Laundry

33mm edge contrasting laminate shelf to Laundry

One set of two drawers to Ensuite vanity

Two sets of two drawers to Bathroom vanity

10mm finger pull handles to overhead cupboards to Laundry and Ensuite

30mm recessed finger groove handles to all remaining cabinetry to Laundry

Builders Catalina range cabinet handles to all remaining cabinetry to Ensuite and Bathroom

Full height wall tiling to Ensuite, Ensuite WC, Bathroom and Main WC

Floor tiling to Laundry, Ensuite, Ensuite WC, Bathroom and Main WC

Tiled niche to Ensuite shower recess

Tiled niche to Bathroom shower recess

Builders Catalina range toilet roll holders and towel rails

Two 1290mm high frameless 500mm wide mirrors to Ensuite vanity area

840mm high frameless full width mirror to Ensuite recess

1290mm high frameless full vanity width mirror to Bathroom

Tile insert floor wastes

Hobless showers to Ensuite and Bathroom

Mitred tiled edges throughout

1690mm long bath to Ensuite

Velux VSS Solar Skylight to Study