



The Mahala



BLUEPRINT HOMES WA PTY LTD

257 Balcatta Road, Balcatta WA 6021
 PO Box 772, Balcatta WA 6914
 6241 4888
blueprinthomes.com.au



Disclaimer: This information is accurate at time of printing. All details are to be confirmed during your consultation with your Blueprint representative and your final plans and addenda will represent what you have purchased.
 09/2022_BP0749_BRN11904



9440 1800
blueprinthomes.com.au

It's *better* building
 with **Blueprint**

The Mahala

12 Boudicca Drive,
Forrestdale
(Mahala Estate)



4



2



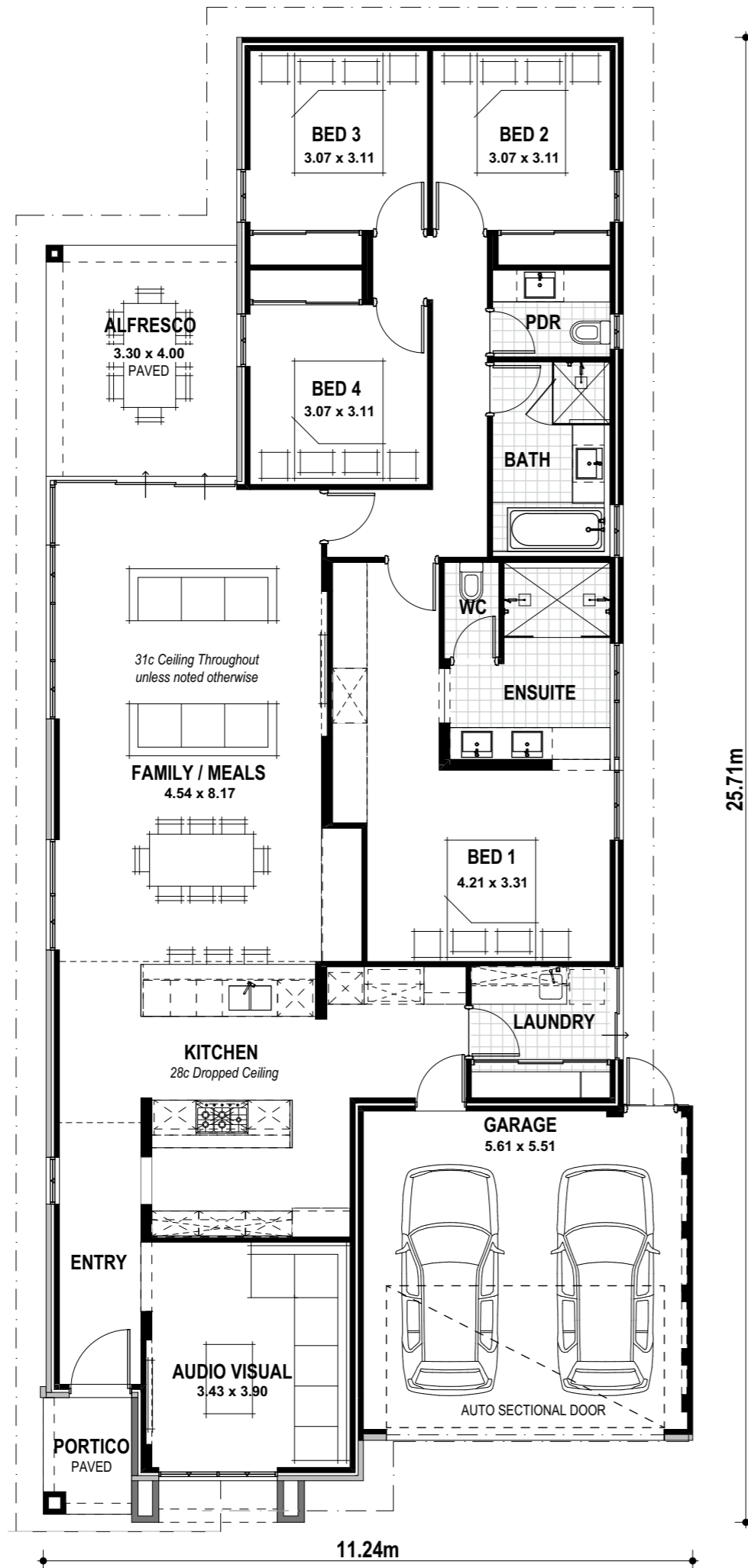
2

VITAL STATS

Living area 207m²
(including Alfresco)

Total area 242m²
(excluding eaves)

Scale 1:100



NAME

SIGNATURE

DATE / /

The Mahala Specification

STANDARD INCLUSIONS

- Home Owners Indemnity insurance
- H.I.A. fixed Building Contract
- 6 Star compliant home
- 4 month maintenance period
- Re-Peg to site (to new subdivisions)
- Contour survey completed on your block
- Building Permit and Water Corporation application fees included
- Termite treatment and certificate
- Double clay brick construction
- 2 course Blueprint Homes range external face bricks
- Rolled brick joints in cream mortar
- Your choice of Builder's specification COLORBOND® metal roof range
- COLORBOND® fascia, downpipes and slotted gutters
- 25° roof pitch as standard
- H2 treated roof timbers
- Painting specification includes ceilings and cornice, doors and door frames, eaves, woodwork and meterbox
- Feature Front Elevation
 - Acrylic render to Front Elevation (including Portico pier), left hand side Elevation (including left hand side of Bedroom 3/Bedroom 4), rear wall of Family/Meals and Alfresco pier (excludes Garage internally and Garage zero lot wall)
 - Builders Mahala range composite cladding to section of Front Elevation
 - Builders Mahala range 1c external face brickwork to section of Front Elevation
 - Double Garage with 31c high 10mm plasterboard ceiling and concrete hardstand
 - Builders Mahala Architectural range auto sectional door with 3 controllers to Garage
 - Up to 6m long full width paved Driveway, Verandah/Portico/Porch, Alfresco and 1m wide path (from Builders 60mm Display range) (with exception of rear Garage designs which include a 2m long Driveway as standard)
 - 31c high ceilings as displayed
- Dropped ceilings at 28c to Kitchen and Kitchen Passage
- 10mm plasterboard 3c recessed ceiling to Alfresco
- R4.0 ceiling insulation to home including Garage
- Builders Display range cornice throughout internally, to Porch, to Alfresco and to Garage
- Gyprock lining to all internal walls (excluding Garage and full height wall tiling areas)
- Quality Dowell powder-coated aluminium sliding glass doors
- Quality Dowell powder-coated aluminium breeze lock windows
- Flyscreens to all aluminium opening windows and sliding doors
- 28c high x 1000mm wide aluminium single lite (clear glass) door and frame to Front Entry
- Pull handle entry set to Front Entry door
- 28c high aluminium 3 panel stacker sliding door to Family/Meals / Alfresco and 28c high aluminium 2 panel sliding door to Laundry
- 28c high head to all aluminium windows
- Corinthian Deco range solid door to Garage/Kitchen
- Duracote solid door to Rear Garage
- Gainsborough Trilock Contemporary door hardware to Garage/Kitchen and Rear Garage doors
- 2340mm high doors and frames internally (excludes Laundry, Garage/Kitchen and Rear Garage)
- M&B Brentwood (translucent glass) door between Laundry and Kitchen
- Corinthian Deco range honeycomb doors elsewhere internally
- Builders Mahala range lever door handles to internal doors
- Quality Mirrorline sliders to Minor Bedroom robes and Laundry Linen
- Built-in shelving system with upgrade laminate finish and colour, contrasting upgrade laminate colour and Display range cabinet handles to Master Suite walk-in robe
- Built-in shelving system to minor Bedroom robes
- Built-in Linen with 4 white lined shelves
- Future connect pack including TV, phone and internet point
- Double power points throughout excluding Garage and appliance locations
- 3 external light points, 1 Garage ceiling light point and ample internal light points
- Builders Display Range Clipsal Iconic light switches and power points
- Flumed exhaust fan to Ensuite, Ensuite WC, Bathroom and Main WC
- Builders Mahala range exhaust fans throughout
- Hard wired smoke detectors
- 2 safety switches
- Lock and viewing panels to both meter boxes

- Builders Mahala range plumbing fixtures and fittings (including 2nd shower set to Ensuite)
- 6 star gas continuous flow 26L hot water system
- 2 external garden taps
- Three stone colours allowed to benchtops
- Two vinyl wrap satin colours allowed to Kitchen and Scullery
- Soft closing cabinet doors and drawers (excluding push catch areas)

KITCHEN

- Builders Mahala range 40mm mitred edge stone benchtop to Kitchen
- Builders Mahala range 40mm mitred edge stone waterfall ends to Kitchen (2 in total)
- Builders Mahala range 20mm thick x 260mm high stone splashback to Kitchen
- Chalk finish laminate to Kitchen
- Contrasting standard finish laminate kickboard to Kitchen
- Pot drawers to Kitchen
- Overhead cupboards to Kitchen
- Laminate pantry with 4 white lined shelves to Kitchen
- Push catch handles to fridge recess cupboards, pantry doors and cupboard over microwave to Kitchen
- 10mm finger pull handles to all remaining overhead cupboards to Kitchen
- 30mm recessed finger groove handles to all remaining cabinetry to Kitchen
- Two Hettich ArciTech 450mm wide bins to full height Kitchen drawer (concealed drawer at top)
- One Electrolux dark stainless steel 600mm multi-function electric oven to Kitchen
- Electrolux 900mm black ceramic glass gas hot plate to Kitchen
- AEG stainless steel 120cm ceiling rangehood (DCE5280HM) to Kitchen
- Electrolux dark stainless steel microwave with trim kit to Kitchen
- Electrolux fully integrated dishwasher with cold tap, single power point and laminate panel to match adjacent Kitchen cabinet doors
- Standard mirror as splashback above stone splashback to Kitchen

LAUNDRY, ENSUITE, BATHROOM AND POWDER

- Builders Mahala range 20mm thick stone benchtops to Laundry, Ensuite, Bathroom and Powder (no waterfall ends)
- Chalk finish laminate to Laundry, Ensuite, Bathroom and Powder
- Overhead cupboards to Laundry
- Two sets of two drawers to Ensuite vanity and Bathroom vanity
- One set of two drawers to Powder vanity
- 10mm finger pull handles to overhead cupboards to Laundry
- 30mm recessed finger groove handles to all remaining cabinetry to Laundry, Ensuite, Bathroom and Powder
- Automatic washing machine taps
- Full height wall tiling to Ensuite, Ensuite WC, Bathroom and Powder
- Floor tiling to Laundry, Ensuite, Ensuite WC, Bathroom and Powder
- Tiled ledge to Ensuite shower recess
- Tiled ledge to entire length of Bathroom shower recess/vanity/bath wall
- Tiled low wall between Bathroom shower recess and vanity
- Builders Mahala range toilet roll holders and towel rails
- Two 10mm thick frameless clear glazed fixed shower screen panels to Ensuite (with brushed nickel fittings)
- 10mm thick frameless clear glazed fixed shower screen panels and hinged door to Bathroom (with brushed nickel fittings and handle)
- 1390mm high frameless full vanity width mirror to Ensuite
- Two 1460mm high frameless mirrors to Bathroom
- 1290mm high frameless mirror to Powder
- Tile insert floor wastes
- Hobless showers to Ensuite and Bathroom
- Mitred tiled edges throughout
- 1675mm long bath to Bathroom
- Linen cabinet with standard finish laminate and push catch handles to Meals